

Hartselle Utilities

SANITARY SEWER SYSTEM REHABILITATION

Basin “N” Interceptor



May 5, 2025

AGENDA

- Introduction to Project Team
- Sewer Rehabilitation Program Overview
- Project Overview
- Project Map
- Sewer Rehab Methods
- Estimated Construction Schedule
- What to Expect During Construction
- Project Summary
- Questions



Project Team

- Blake McNutt, Public Relations Manager
Bmcnutt@Hartselleutilities.org (Hartselle Utilities)
- Daxton Maze, Engineering Service Manger
DMaze@hartselleutilities.org (Hartselle Utilities)
- Ryan Smith, Project Manager
Rsmith@Rangerenv.us (Ranger Environmental)



Project Overview

- Replace and repair our aging pipes as part of our comprehensive sewer rehabilitation program.
- Correcting structural deficiencies in sewer mains that may contribute to sewage overflows, including upsizing pipe to handle heavier flows to prevent overflows.
- Sewer mains will be rehabilitated using pipe bursting and open cut methods.
- Approximately 1.25 miles of sewer pipes will be rehabilitated or replaced.

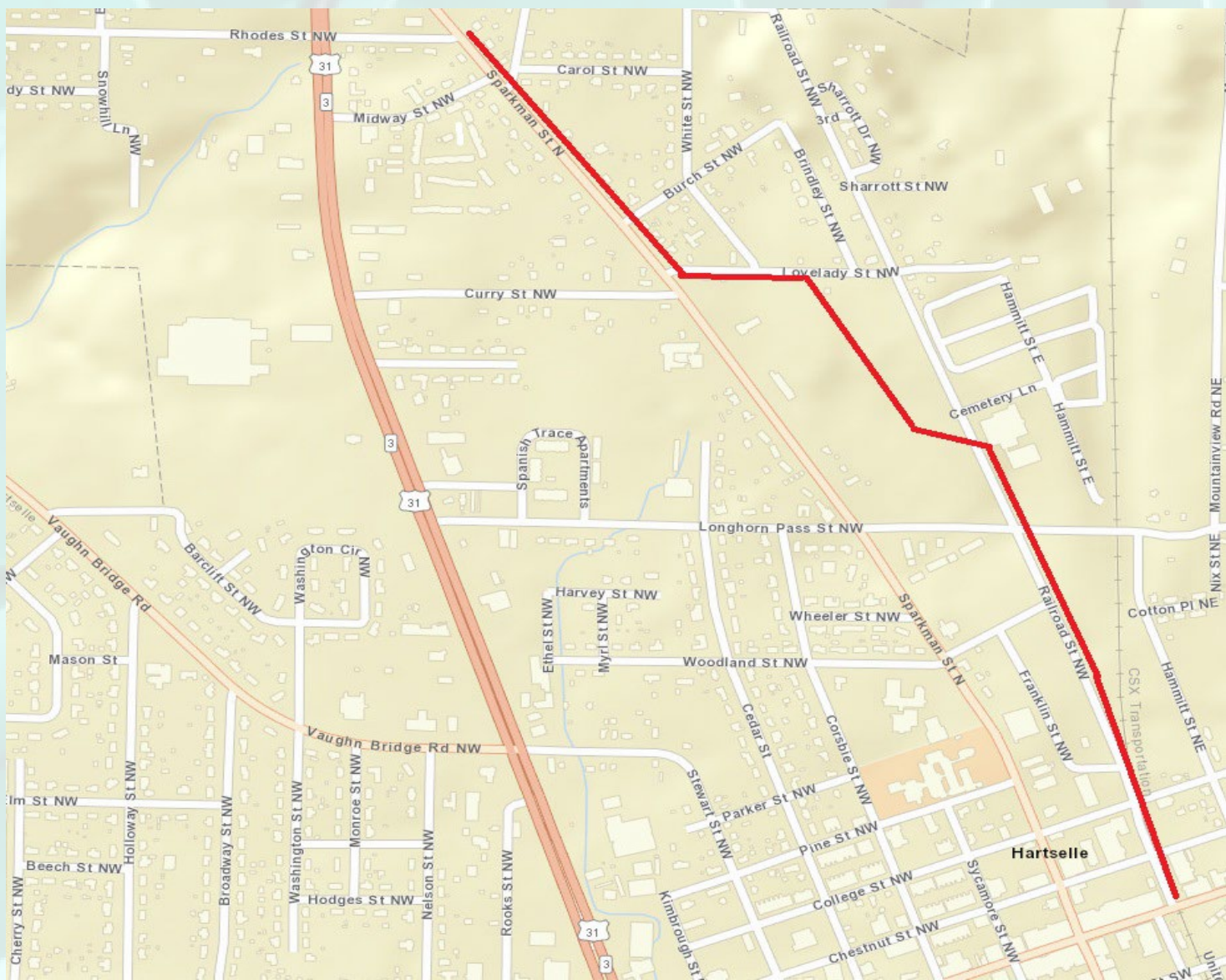


Project Overview

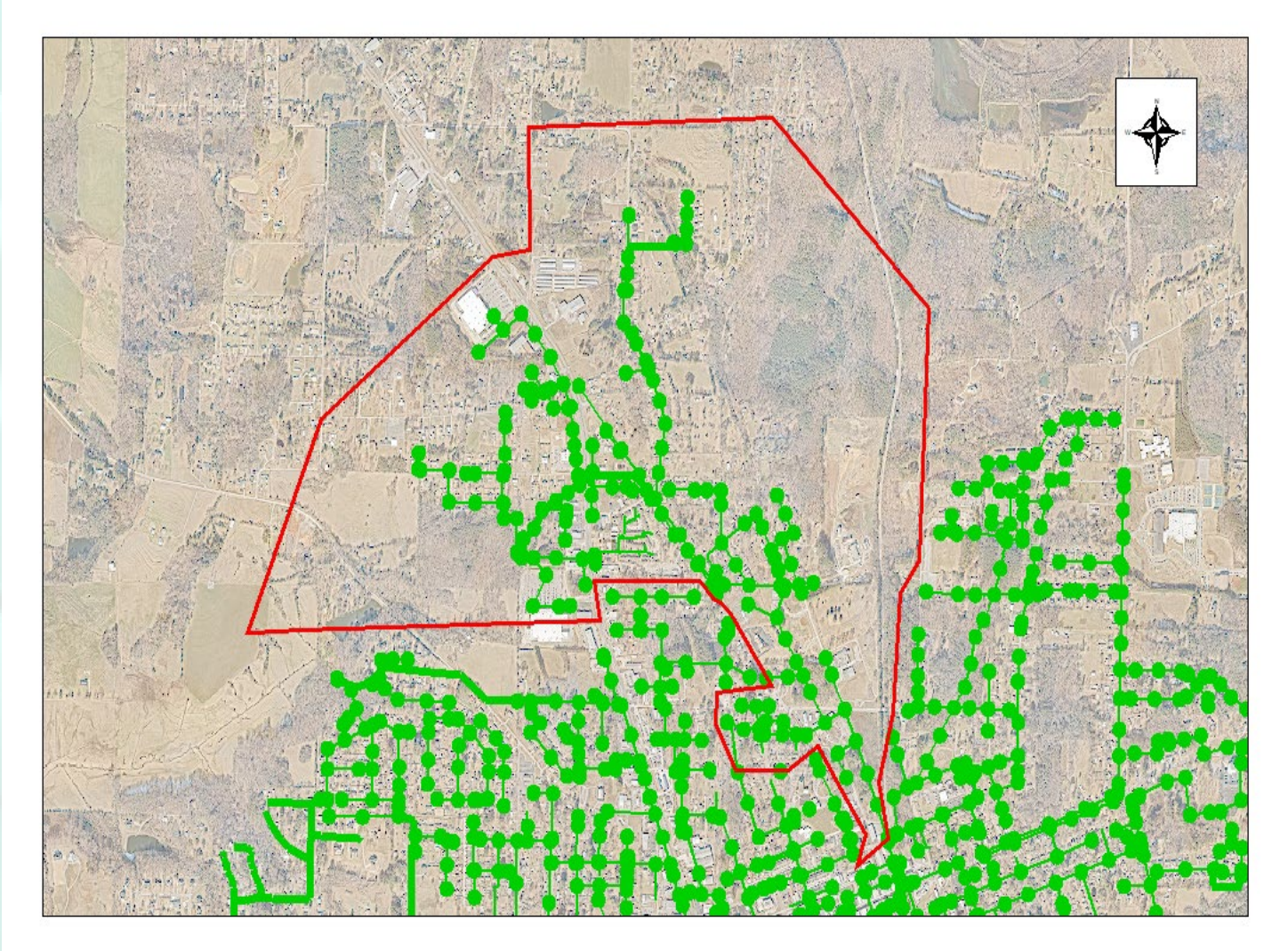
- Approximately 24 manholes will be rehabilitated or replaced.
- Sewer lateral connections to the rehabilitated main will be reconnected at the sewer easement.
- Rehabilitation for Basin N Interceptor is Schedule 1 of a two-part schedule; Schedule 2 work is yet to be determined.
- Ranger will restore areas affected by construction.



Project Map



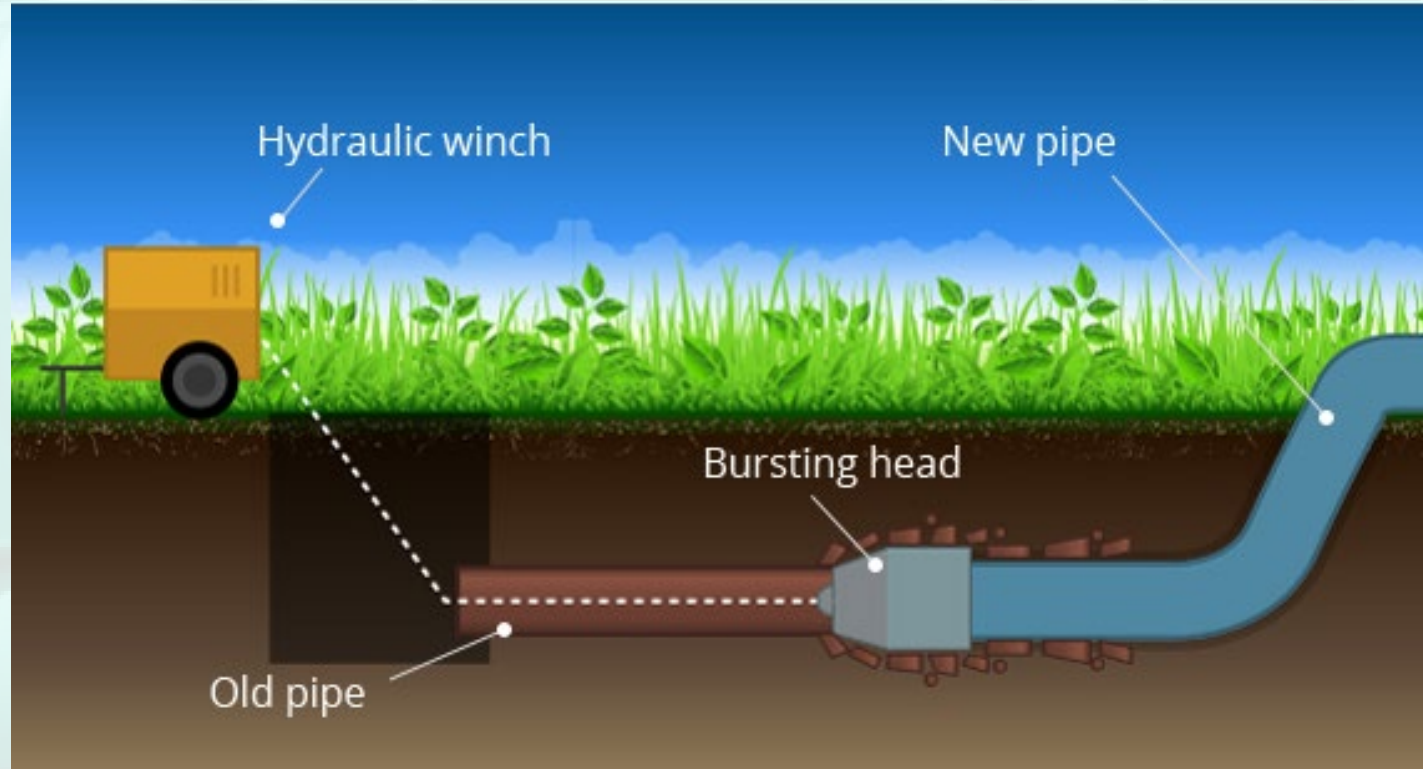
Project Map



Basin N



Sewer Repair Methods



Pipe Bursting

Sewer Repair Methods



Open Cut

Estimated Construction Schedule

- Expected Construction Start Date for Schedule 1: **June 16, 2025**
- Expected Construction Finish Date for Schedule 1 : **October 14, 2025 (Weather Permitting)**
- Following the completion of Schedule 1, Schedule 2 is expected to start and be completed by **February 11, 2026.**



What to Expect During Construction

- Anticipated Work schedule: 7:00 a.m. to 6:00 p.m., Monday-Friday.
- Some weekend work may be required as needed.
- Marking locations of utilities.
- Field Inspections.
- Rehabilitation of sewer mains, manholes and laterals.
- Pavement restoration where digging is necessary.
- Reliable sewer service will be maintained during construction.



Project Summary

- Ranger will be rehabilitating mains, manholes, and some laterals.
- Lateral work will not extend past the easement.
- Ranger will restore all areas impacted by construction activities at the end of the project.
- Hartselle Utilities understands the inconvenience projects like this can cause and appreciates our customers' patience. Ranger fully understands the high expectations HU has for maintaining reliable, respectful service throughout the project.



QUESTIONS?

- Feel free to reach out with any questions at inquiries@hartselleutilities.org
or call our main office at **(256) 773-3340**

